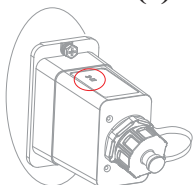


WiFi/Ethernet Dongle Quick Installation Guide

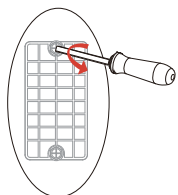
1 Indicator(s)



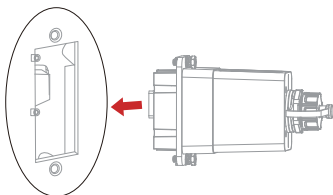
(p) Network
LAN

Indicator	Status	Explanation
Network	Solid Green	Normal status
	Solid Red	Fail to connect to inverter
	Solid Yellow	Fail to connect to router
	Solid Blue	Fail to connect to server
LAN (only LAN module)	Solid White	Physically connecting to LAN

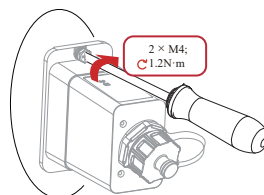
2 WiFi/Ethernet Dongle Installation



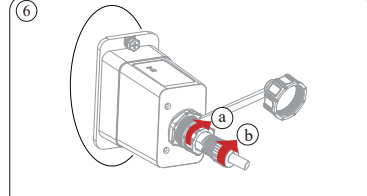
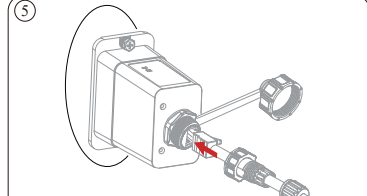
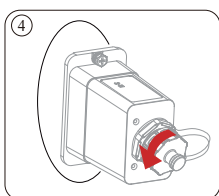
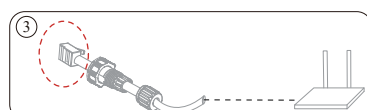
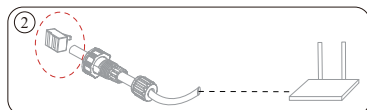
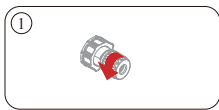
1 Unscrew the cover.



2 Insert WiFi/Ethernet dongle into the port firmly.



3 Secure the WiFi/Ethernet dongle.



4 Take the waterproof connector out of the package and prepare the network cable with network. Insert the network cable.

3 APP Local Settings

Download App

- Scan the QR code to download the App MidNite Pro.

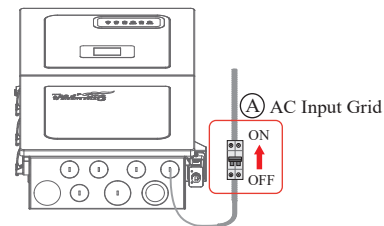


- Download the APP from the App Store or Google Play.

Note:

Before using the local setting, the APP should access some permissions. (You can allow them when you install the APP or grant permissions in your own phone setting.) When the APP asks for permission, please click Allow.

1

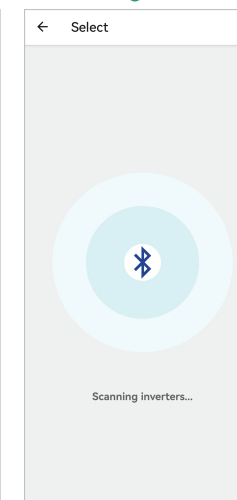
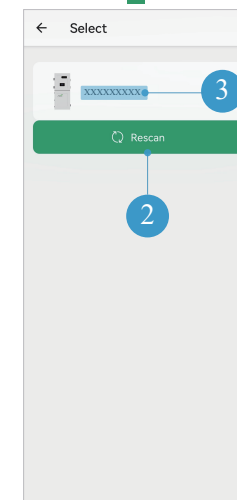
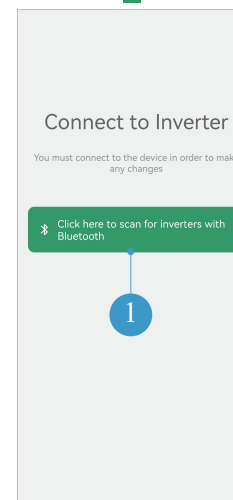


B The first time: Go to APP (Quick Setup)

The non-first-time: 5s "Beep" (H)

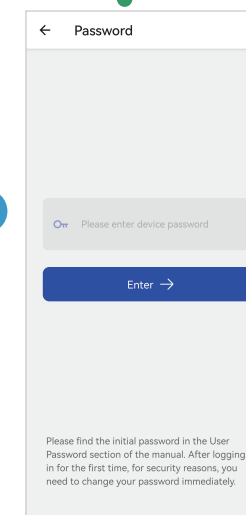
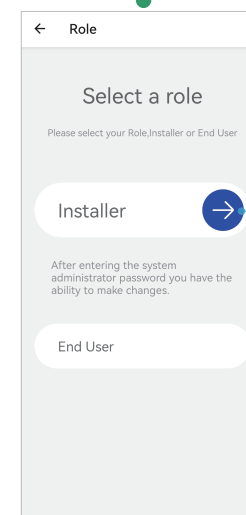
2 Power on the inverter.

Open the APP Connect to inverter Select bluetooth name Wait



3 Firstly, open the bluetooth and the APP on your phone. Then connect the inverter.

Select the installer Enter the password



4 Select the installer role to log in.

Home

Click Communication

Connect to Wifi

1. Click on the 'Settings' button in the Home page.

2. Click on the 'Communication' section in the Settings page.

3. Click on the 'Please enter the SSID' field.

4. Click on the 'Please enter the password' field.

5. Click on the 'Save' button.

5. Connect to the router.

Sign in

Click Create a new plant

Set the parameters

1. Click on the 'Sign In' button.

2. Click on the 'Create a new plant' button.

3. Click on the 'Please enter the plant name' field.

4. Click on the 'Please enter the address' field.

5. Click on the 'Please enter the capacity' field.

6. Click on the 'Please enter the price' field.

7. Click on the '+ Create' button.

Click the plant

Click Add more inverters

Add the inverter into plant

4 Cloud Settings

When using the WiFi or LAN module, a cloud account is needed to monitor inverter's network. Bind the inverter to the cloud account, and then the inverter's operational data will be uploaded to the cloud account after it is grid-tied. You can skip the registration steps if you have a cloud account before.

1. Register a cloud account.

Click Sign Up

Enter the information

1. Click on the 'Sign Up' button.

2. Click on the 'Account Name' field.

3. Click on the 'E-mail' field.

4. Click on the 'verify code in your email' field.

5. Click on the 'Password' field.

6. Click on the 'Enter your password again' field.

7. Click on the 'Your Timezone' field.

8. Click on the 'Sign Up' button.

Add Inverter

8. Click on the 'Add more inverters' button.

9. Click on the '+ Add more inverters' button.

10. Click on the 'Input the SN of your inverter' field.

11. Click on the '+ Add into plant' button.

2. Add inverter to cloud account.