

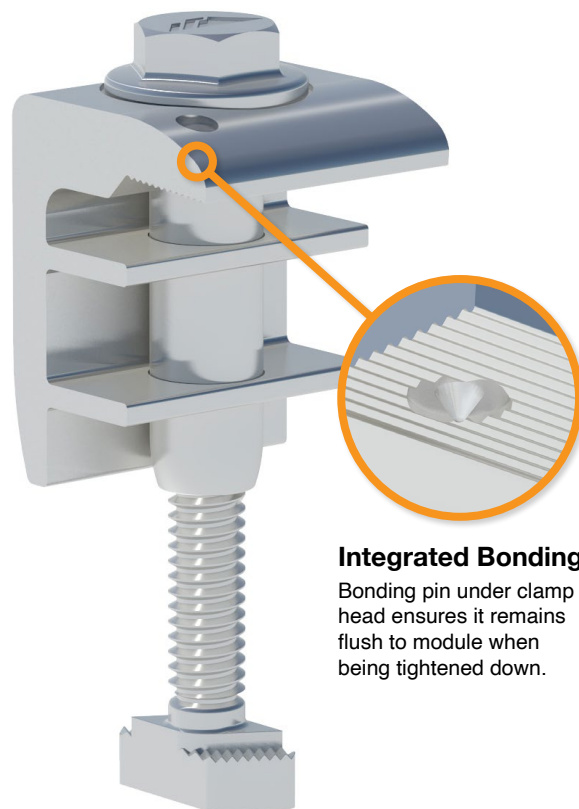
## Universal Design, Across the Board

Module tolerances for frame thickness can be inconsistent and quality may be impacted when made at large scales. Simply put, having a specified height of 30mm does not always mean a module will arrive on a roof that precise.

The IronRidge EFO™ is the End Fastening Object you need to get the job done. We have redesigned the end-clamp system for UFO®, which originally utilized additional Stopper Sleeves to transform UFO® into an end clamp.

EFO™ provides enhanced engagement on modules and supports frame heights of 30 to 40mm. This universal end clamp is a single-piece component that speeds up installation times, especially if modules vary by project.

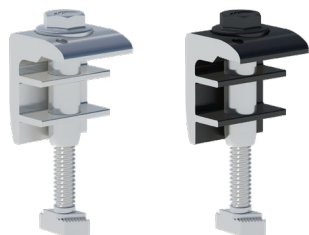
A key feature that mimics that of the UFO® is the long T-bolt that gives the clamp a sleek, simple appearance and lets it incorporate seamlessly into our XR Rails®, allowing installation across many applications – Flush Mount, Tilt Mount, and Ground Mount.



## No More Show Stoppers

On-site assembly of end clamps is no longer required on XR Rail® projects. Previously, UFO® clamps needed Stopper Sleeves snapped on by hand to convert them from a mid clamp to an end clamp.

Those slowdowns are no more – EFO™ is here! IronRidge is always focused on ways to streamline installations and listens to customer feedback. EFO™ is yet another example of that commitment.



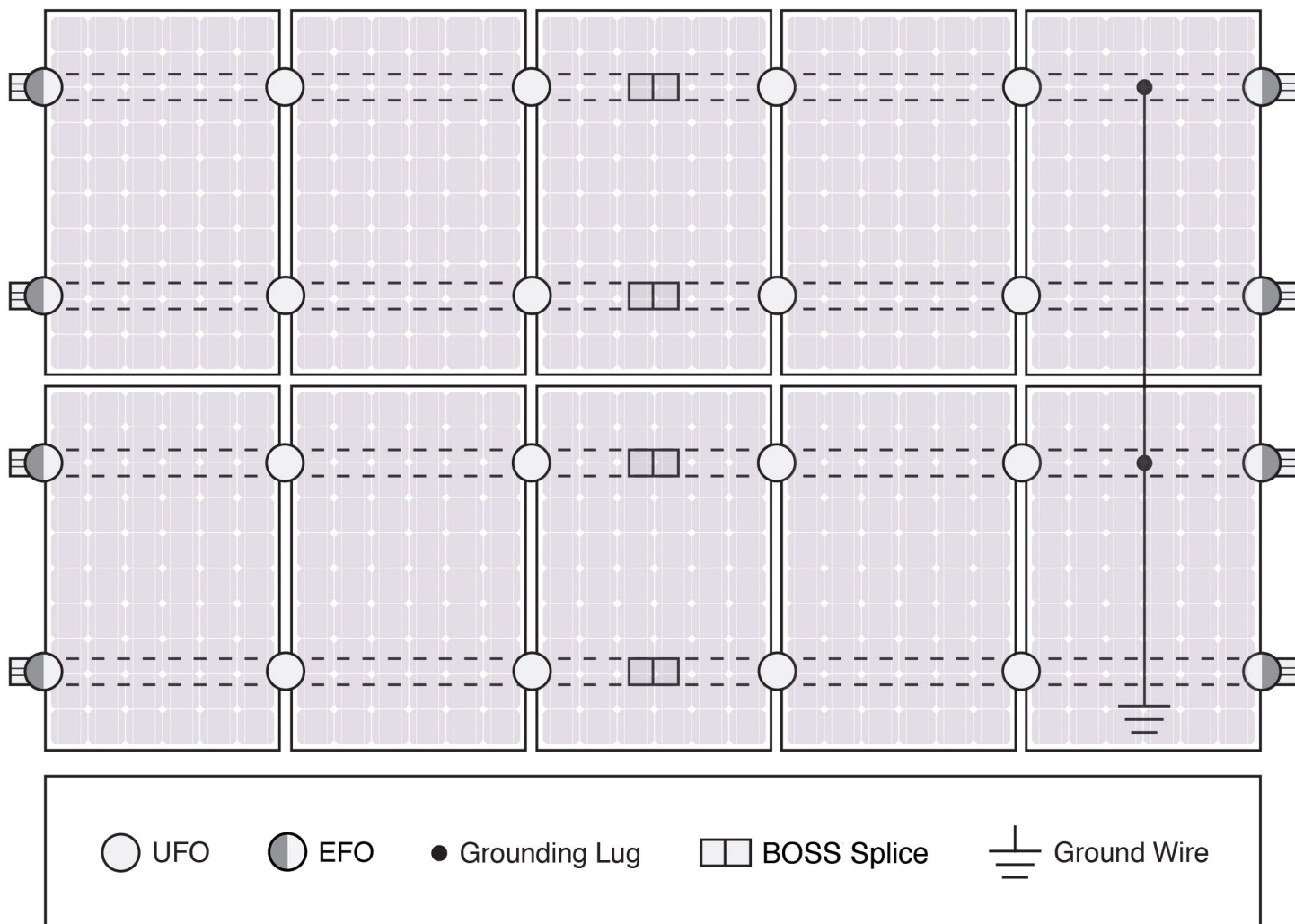
## Keeping Things Simple

- Comes in mill (UFO-END-01-A1) and black finish (UFO-END-01-B1).
- Works as a universal end clamp and fits module heights of 30-40mm.
- Fully certified, 25-year warranty, and compatible across all XR systems.

Visit [IronRidge.com/EFO](https://www.ironridge.com/EFO) to learn more.



## System Diagram



⚠ Approved Enphase microinverters can provide equipment grounding of IronRidge systems, eliminating the need for grounding lugs and field installed equipment ground conductors (EGC). A minimum of two microinverters mounted to the same rail and connected to the same Engage cable is required. Refer to installation manuals for additional details.

## UL Certification

The IronRidge® Flush Mount®, Tilt Mount®, and Ground Mount Systems have been listed to UL 2703 by Intertek Group plc.

UL 2703 is the standard for evaluating solar mounting systems. It ensures these devices will maintain strong electrical and mechanical connections over an extended period of time in extreme outdoor environments.

 [Go to IronRidge.com/EFO](https://www.ironridge.com/EFO)

Cross-System Compatibility			
Feature	Flush Mount	Tilt Mount	Ground Mount
<b>XR Rails®</b>	✓	✓	XR100 & XR1000
<b>UFO®/Stopper</b>	✓	✓	✓
<b>BOSS® Splice</b>	✓	✓	N/A
<b>Grounding Lugs</b>	1 per Row	1 per Row	1 per Array
<b>Microinverters &amp; Power Optimizers</b>	Compatible with most MLPE manufacturers. Refer to system installation manual.		
<b>Fire Rating</b>	Class A	Class A	N/A
<b>Modules</b>	Tested or Evaluated with over 400 Framed Modules Refer to installation manuals for a detailed list.		